



Too much load on circuit.

In today's fast paced society, manufacturing/processing operations often turn to find more efficient means of operation.

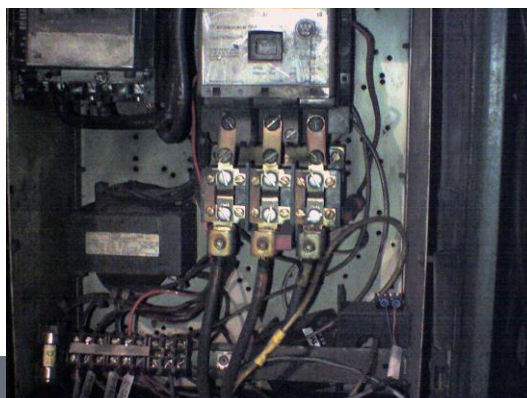
One technology that allows a business to function more efficiently is infrared technology. Infrared technology used in a manufacturing environment, allows early detection of failing electrical and mechanical components.

The infrared picture shown above indicates too much load on the breaker overload heater strips. When an overload or surge in electricity occurs, these heater strips are designed to melt causing an open circuit.

The analyst was able to capture this anomaly and recommend to verify the electrical components and also check load rating.

Personnel at the location quickly responded and found that the circuit was energizing an area thought to be deenergized as well as the newly added components to the circuit.

Corrections made led to zero accidents, and prevented further damage to other electrical components.



- Finding this overload prevented unplanned downtime.
- Prevented further damage of other electrical components.
- Maintained a safe environment.

“Operating costs can be saved from the bottom line by simple infrared testing.”

Any questions feel free to contact Robert Evasic
revasic@me.m.com